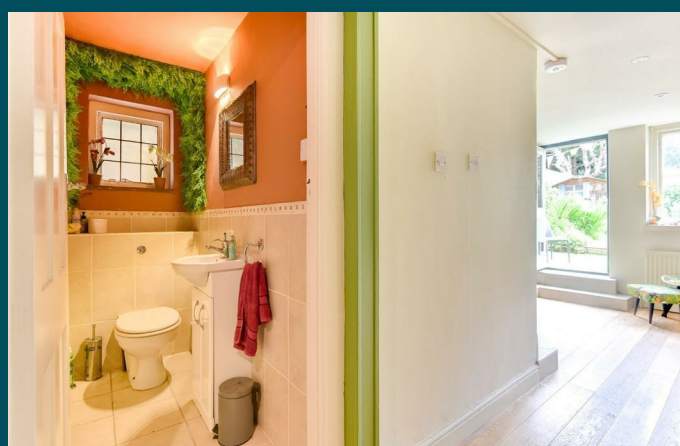
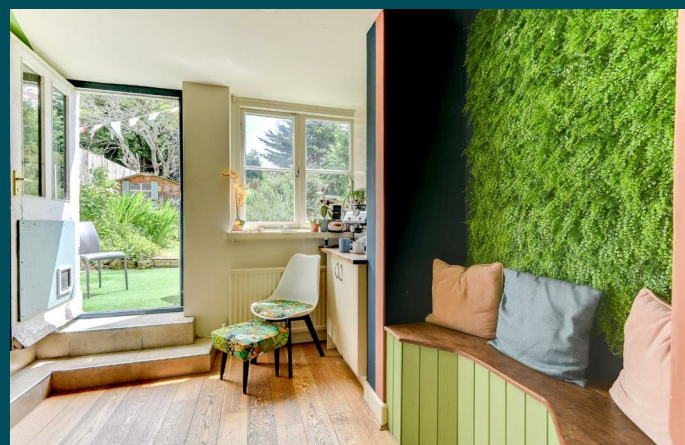




Garden Flat 62 Palmeira Avenue
Hove, BN3 3GF



Garden Flat 62 Palmeira Avenue

Hove, BN3 3GF

Offers in excess of £600,000

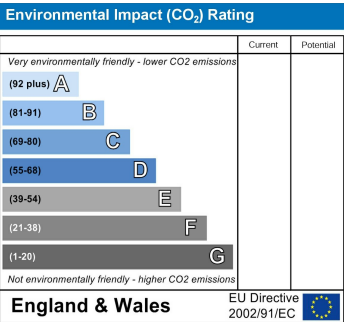
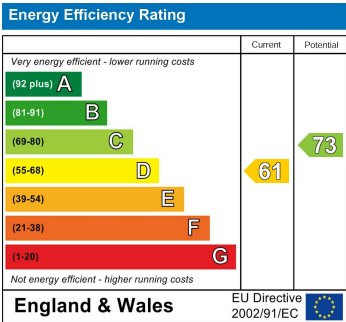
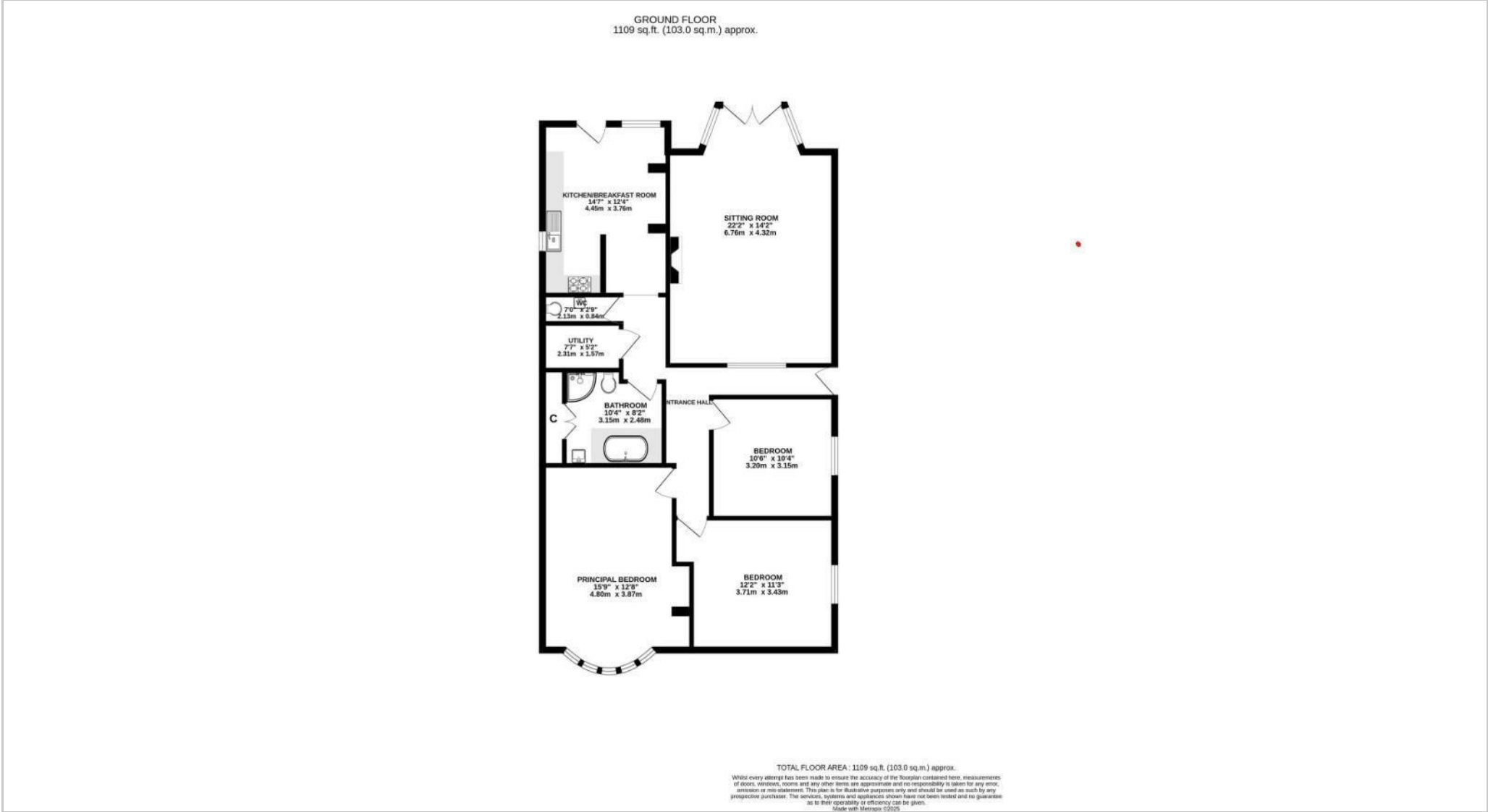
Set within one of Hove’s most iconic tree-lined avenues, this spacious three-bedroom lower ground floor apartment on Palmeira Avenue offers a rare combination of private outside space, period charm, and excellent practicality, including a private entrance and a garage en bloc.

The layout has been cleverly arranged to provide clear definition between living and sleeping areas. At the rear, the large sitting room opens directly onto a private garden through elegant French doors framed by a wide bay, creating a calm and leafy outlook. This character-filled space combines original detailing such as a beautiful tiled fireplace with a bold, playful interior design that adds real personality.

The separate kitchen is positioned adjacent to the main living space and also enjoys direct access to the garden. Finished in a stepped split-level style, it’s a bright and functional room with bags of charm, ideal for anyone who loves a home that feels just a bit different. An easterly aspect brings in the morning sun, making this a lovely spot to start the day.

The three bedrooms are all doubles, positioned to the front and side of the flat. The principal bedroom is particularly generous, with a curved bay window and plenty of space to work with. The second and third bedrooms also offer excellent proportions and natural light. A stylish family bathroom sits centrally within the flat.

A short stroll from the green spaces of Palmeira Square and the seafront beyond, this is a beautifully located home that offers space, character and convenience in one of Hove’s most desirable neighbourhoods.



Pearson
Keehan